

AccuGuard BP2

Modular Safety Beam System

INSTALLATION INSTRUCTIONS

Section 1

General Description

The AccuGuard BP2 is an active infrared 2-beam safety system. This modular system consists of a separate control module, two transmitter beam heads with cables and two receiver beam heads with cables. The beam heads are available for recess mounting (BP2) and can be ordered with surface mount housings (BP2-SURFACE).

When a beam is interrupted, the control module signals the door to open. In the event of a power loss to the AccuGuard BP2, it will also signal the door to open, thus providing a failsafe system.

Section 2

Installation

Mounting (Fig. 1)

1. Mount the Control Module at the desired location in the operator housing using either the supplied screws or two-sided tape.
2. Drill 1/2" holes for each beam head at the desired location in the door frame, sidelight or rail.



NOTE: Opposing beam heads must be mounted at equal heights to function properly.

3. Insert cable through the 1/2" hole and pull cable up to the control module.



WARNING: Be careful not to snag the cable on any sharp edges. Damage to the cable can cause the device to malfunction.



WARNING: To avoid beam "cross talking" mount the transmitter beam heads opposite of each other.

4. **RECESS MOUNT:** Push each beam head into the 1/2" holes.
SURFACE MOUNT: Attach the surface mount housing (with beam heads installed) at the desired location using the supplied screws ensuring the 1/2" holes are covered.



NOTE: In retrofit applications where the existing hole diameter is 3/4", adaptor rings are provided for recess mounting.

Wiring (Fig. 2)

1. Connect beam head cables to the control module (wiring diagram is printed on housing). Each cable's

shielded (ground) wire connects to the middle pin on the terminal blocks. Transmitter cables are black. Receiver cables are gray.



NOTE: If only one set of beams is being used, the transmitter cable must use T1 and the receiver cable must use R1 on the terminal blocks. T2 and R2 remain empty.



WARNING: Any excess cable must be fastened down, clear of any moving parts.

2. Connect the control module outputs to the operator control - select N.O. (normally open) or N.C. (normally closed).
N.O. = Contacts close when beams are broken or when power to the control module is interrupted (failsafe).
N.C. = Contacts close when beams are not broken.
3. Connect power supply to the control module: 12-24 V AC or DC.

Section 3

Set Up Instructions

Adjustments and Troubleshooting

With power applied, the status LED on the control module should be solid red. If a beam is broken, the status LED should flash red.

Solid Red LED: Indicates beam continuity and system OK.

Flashing Red LED: Indicates the beam is broken and system OK.

OR

Opposite beam heads are out of alignment and need to be realigned.

Openings 36" or greater: The BP2 control module software provides automatic system set up and beam sensitivity adjustment.

Openings less than 36": System set up remains automatic, however manual sensitivity adjustment of the beams may be necessary. Manual sensitivity adjustment for each beam set is provided on the control module. If the solid red LED does not begin flashing when a beam is broken, reduce the sensitivity until it does.

AccuGuard BP2

Modular Safety Beam System

INSTALLATION INSTRUCTIONS

Section 4

System Inspection and Instructions

*****EXTREMELY IMPORTANT*****

After final set-up, test unit(s) completely to ensure that proper coverage has been achieved (width, depth and location of the pattern must be tested).

After the installation and operational check of the system:

1. Ensure the AccuGuard BP2 is being used in compliance with ANSI/BHMA 156.10.
2. Place the proper labels on the door per ANSI/BHMA A156.10, A156.19 & BS 7036.
3. Instruct the owner of the door system operation and how to test it. This should be checked on a daily basis.
4. Instruct the owner on what to do if the door or any of its components become damaged.
5. Strongly recommend to the owner that the complete entry be inspected twice a year as part of the service agreement.

Section 5

Technical Data

Model..... AccuGuard BP2

Size.....

Control Module..... 2 3/4"L x 2"W x 3/4"D"

Recess Mount

Beam Heads..... 1/2" Dia. x 5/8"D

Surface Mount Beam

Head Housing..... 2 7/8"L x 1 1/2"W x 1"D

Cable..... 2-conductor, 20 ft. ea.

**Color Coded: Black=transmitter,
Gray=receiver**

Detection Method..... Active Infrared Beam Interrupt

Detection Range..... 0 to 16 Feet

Power Requirements.. 12V to 24V AC or DC
(No Polarity Requirements)

Light Resistance..... Sun—150,000 LUX
Artificial—50,000 LUX

Power Consumption... <80 mA

Relay Contacts..... Form C, Rated @ 1 Amp
(resistive loads only)

Relay Activation Time. 10 ms

Relay Hold Time..... 500 ms

Status LED..... Solid Red=Beam Continuity
Flashing Red=Beam Interrupt

Temperature..... -31 ° F to 131 ° F
(-35 ° C to 55 ° C)

Mounting:

Control Module..... Any Available Door Header

Space

Recess Mount

Beam Heads..... 1/2" Dia. Hole, 1" Deep

Surface Mount

Beam Heads..... Any Available Surface

Section 6

Warranty

MS Sedco guarantees this product to be free from manufacturing defects for 12 months from date of installation. Unless MS Sedco is notified of the date of installation, the warranty will be in effect for 12 months from the date of shipment from our factory. If, during the first 12 months, this device fails to operate and has not been tampered with or abused, the unit can be returned prepaid to the factory and it will be repaired free of charge. After 12 months, the unit will be repaired for a nominal service charge.

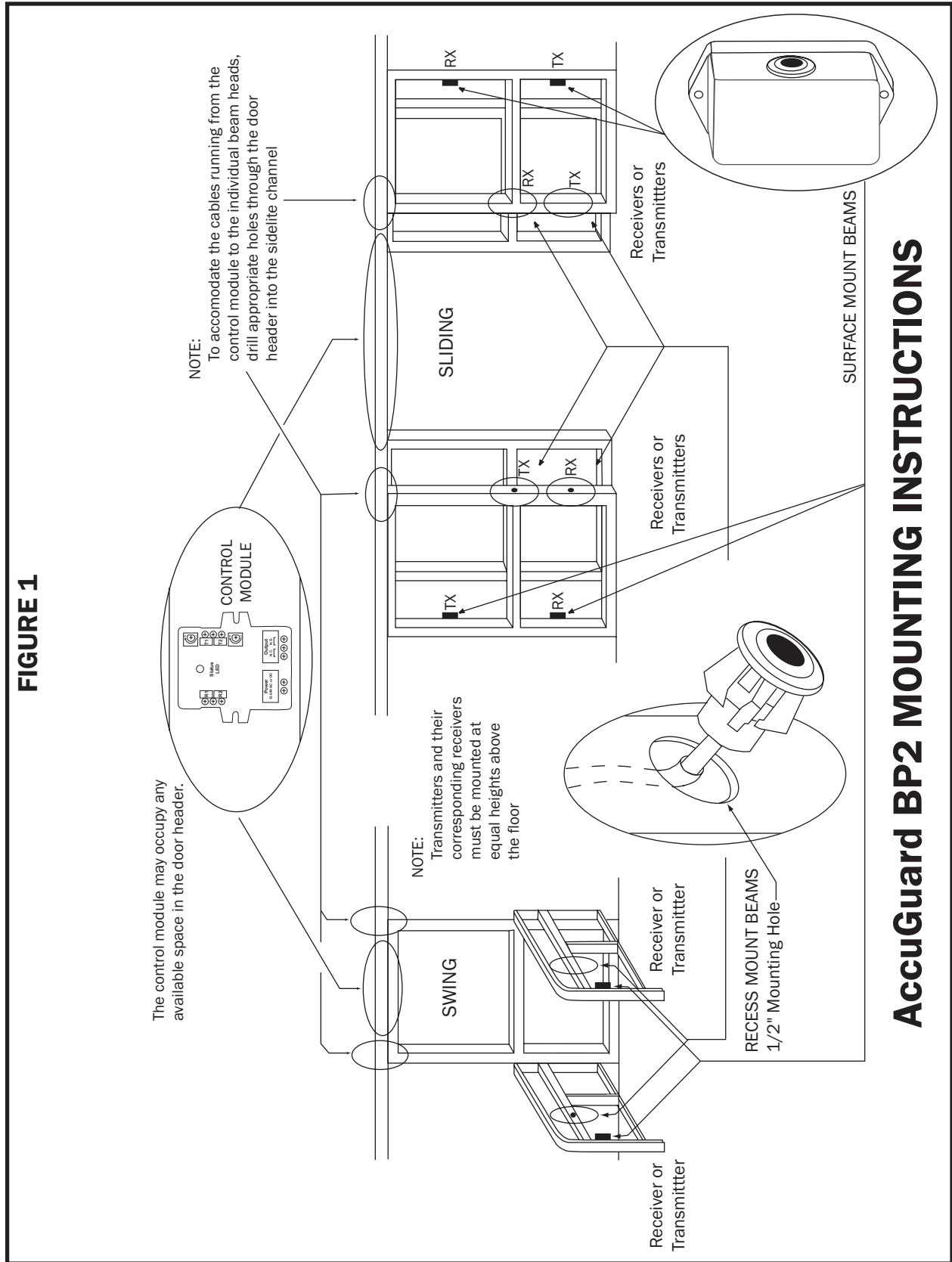
This limited warranty is in lieu of all other warranties expressed or implied, including any implied warranty of merchantability, and no representative or person is authorized to assume for MS Sedco any other liability in connection with the sale of our products. All warranties are limited to the duration of this written warranty. In no event shall MS Sedco be liable for any special, incidental, consequential or other damages arising from any claimed breach of warranty as to its products or services.



AccuGuard BP2

Modular Safety Beam System

INSTALLATION INSTRUCTIONS



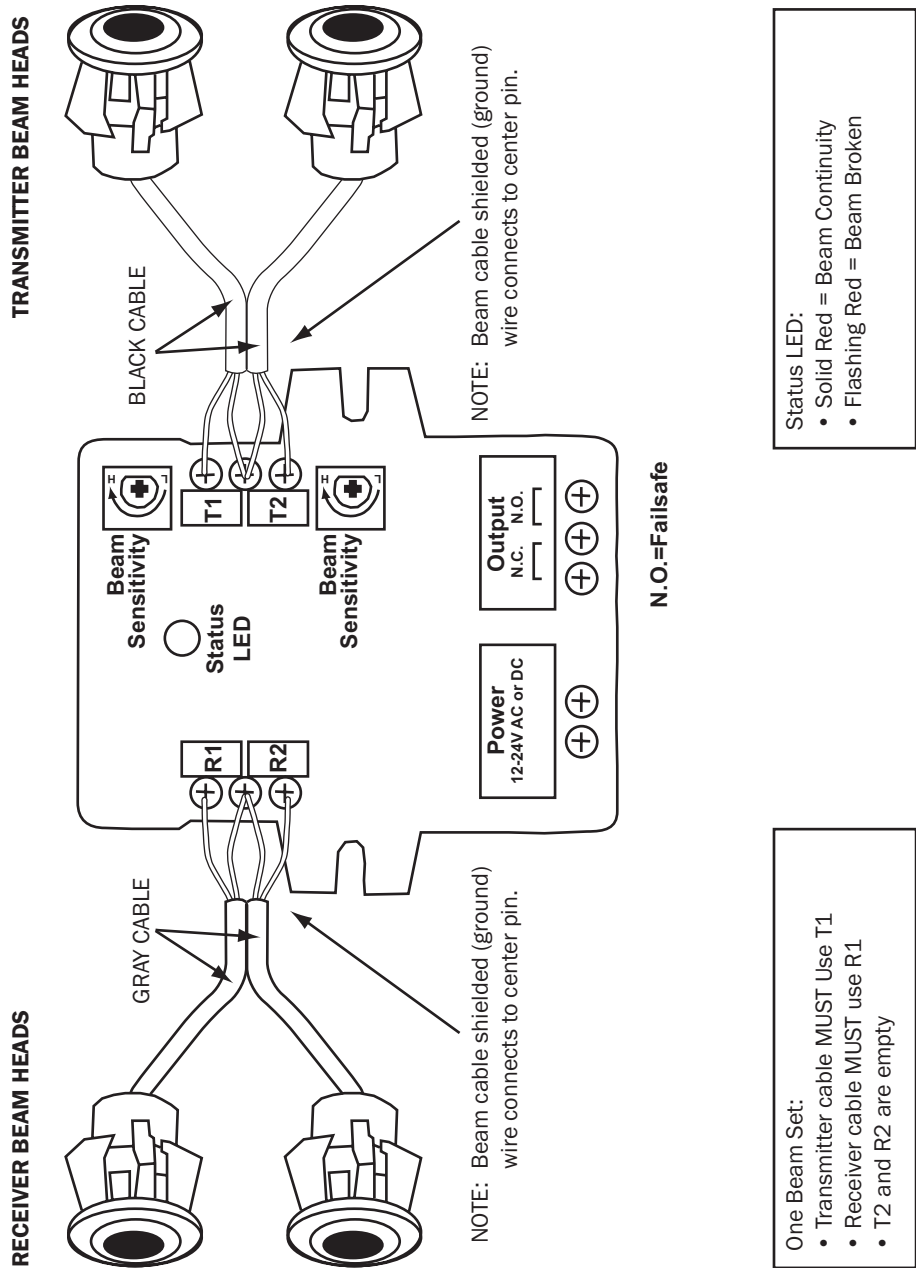
AccuGuard BP2 MOUNTING INSTRUCTIONS

AccuGuard BP2

Modular Safety Beam System

INSTALLATION INSTRUCTIONS

FIGURE 2



AccuGuard BP2 WIRING DIAGRAM